



## PRODUCT DESCRIPTION:

The PA.155 pump is equipped with:

- Adjustable inlet fitting
- Silencer at the outlet
- Vacuum regulating valve (150÷500mbar Abs.)
- Shock mounts

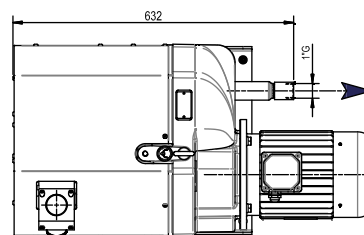
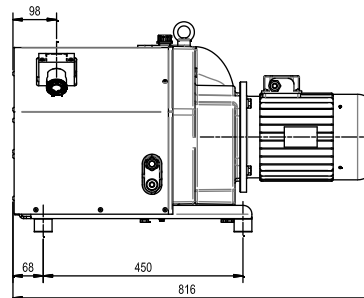
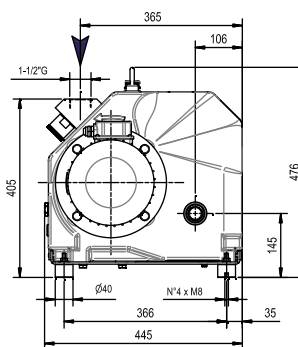
The PA.155 claw pumps create air volume and transfer it through the intake duct to the outlet duct by means of the rotation of two claw shaped rotors in a moulded chamber.

The dry-running contactless rotation of the rotors is synchronized by gears without any lubricant present, thus avoiding any residue generated by friction or rubbing during rotation. The gear wheels themselves are lubricated with oil and are enclosed in two compartments separated from the rotation chamber by gaskets.

PA.155 claw pumps guarantee low operating costs thanks to moderate energy consumption and high efficiency. Maintenance is minimized and the level of performance is maintained for longer by virtue of the lack of friction between the moving rotors.

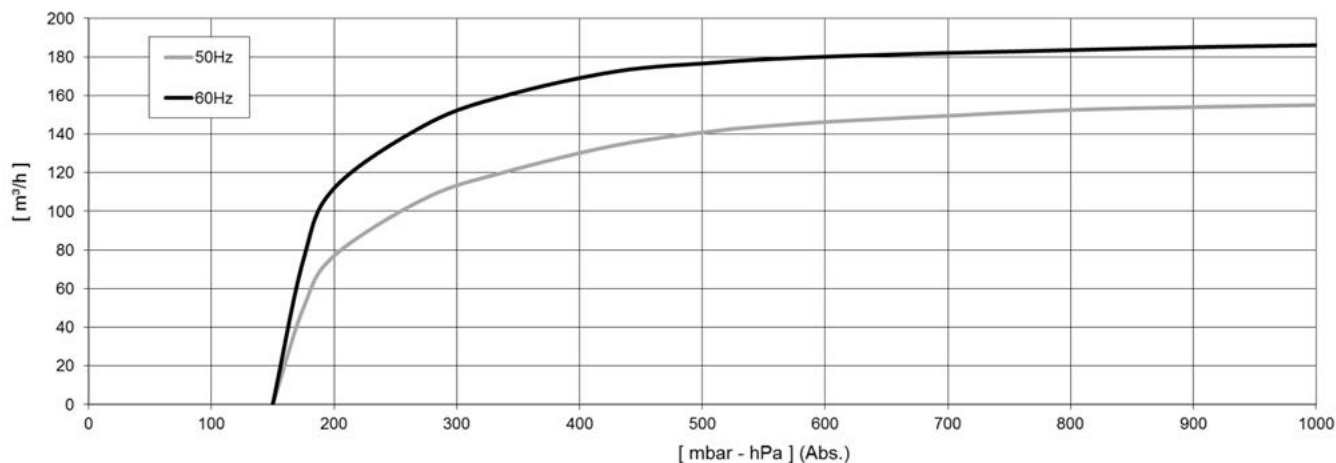
## MAIN APPLICATION FIELDS:

Woodworking, thermoforming, pasta sector, packaging, water aeration, chemical-pharmaceutical applications, medical vacuum in dental and surgical clinics, CNC routing machines, soil remediation, vacuum conveying systems.



Subject to change without prior notice

Main accessories	PA.155
Spare parts kit	<b>K9816002</b>
Shock mounts	Di serie / Fitted
Inlet filter	9001018
Stepped hose fitting	2103015 (Ø40)
Vacuum gauge	9009003
Non-return valve	9007105
Additional silencer	9002024



NOTE: Graph shows inlet pressure at a temperature of 20°C (tolerance ±10%)

Subject to change without prior notice

		<b>PA.155</b>	
		50Hz	60Hz
Catalog code		9816002	
Nominal capacity	m³/h	155	186
Total final pressure (Abs)	mbar - hPa	150	
Motor power	(3~) KW	3	3,6
Nominal r.p.m.	n/min	2800	3300
Noise level (UNI EN ISO 2151 - K 3dB)	dB(A)	78	81
Weight	(3~) kg [N]	135 [1325]	
Pump intake / outlet		1-1/2"G / 1"G	
Type of oil	cod. DVP	GR150	
Oil quantity	dm³	0,5	
Required room temp. for place of installation	°C	0 ÷ 40	
Ambient temperature for storage / transport	°C	-20 ÷ 50	
Max humidity / altitude		80% / 1000m s.l.m. *	

(\*) Please contact us if environmental conditions are different from those prescribed.